

Ausstellungsdatum 2023-06-08
Issued on

Gültig bis 2028-06-07
Valid until

IMQ, benanntes Zertifizierungsinstitut, berechtigt die Firma
IMQ, authorised certification body, grants the company

IDO S.r.l.
Via Monti Urali 24
42122 REGGIO EMILIA RE, ITALY

das Zeichen zu Verwenden
to use the mark



oder
or



für die folgenden Produkte
for the following products

Technische Daten / Technical characteristics

Produkt / Product	Rope lights
Bemessungsspannung / Rated voltage	220-240 V
Bemessungsfrequenz / Rated frequency	-
Schutzklasse / Class	II
Schutzart / Degree of protection	IP67

Modell/Typbezeichnung / Articles (with details)

Warenzeichen / Trade mark	IDO LIGHT
Modell/Typ(en) / Type(s)	LED RL36 X, LED RL36-1 X
Bemessungsleistung / Rated power	1,9W ... 86W or 2,8W ... 126W or 4,6W ... 207W

Prüfgrundlagen/Standards	EN 60598-1:2015 + A1:2018, EN 60698-2-21:2015, IEC/TR 62778:2014, AfPS GS 2019:01 PAK
Prüfberichte/Test Reports	AI20-0052801-02

Einzelteile / Component List siehe Anhang (see annex) 1

Abbildungen / Illustrations siehe Anhang (see annex) 2

Modellliste und Beschreibung / Models list and description siehe Anhang (see annex) 3

Das Produkt entspricht den Anforderungen hinsichtlich der Gewährleistung von Sicherheit und Gesundheit (§ 20 Absatz 3 Nummern 1 bis 3 ProdSG). Dem Zertifikat liegen die Geschäftsbedingungen und die Prüf- und Zertifizierungsordnung der Prüfstelle zugrunde.

The product complies with the requirements in regards of safety and health (§ 20 Paragraph 3 Nos. 1 to 3 ProdSG). This certificate is issued based on the regulations of the certification body.

Das Produkt entspricht den oben genannten Anforderungen, die Herstellung wird überwacht (§ 20 ProdSG). Der Hersteller hält die Voraussetzungen ein, die für eine vorschriftsmäßige Fertigung erforderlich sind und duldet die damit verbundenen Kontrollmaßnahmen zur Überwachung der Fertigung (§ 22 ProdSG).

In accordance to the rules of GS certification, product surveillance is performed (§ 20 ProdSG). The manufacturer must meet the requirements for production, and accept any control measures related to production surveillance (§ 22 ProdSG).

IMQ S.p.A.
I - 20138 Milano
Via Quintiliano, 43

Tel: +39 0250731 (r.a.) e-mail: info@img.it
Fax: +39 0250991500 www.img.it



Leiter der Zertifizierungsstelle
IMQ S.p.A.

Fertigungsstätte(n)

Place(s) of manufacture

Zhongshan J.M.X Electronics Co. LTD
6/F, One of no. 233, Dongrui Ind. Zone
Shenglong Village, Xiaolan Town
528400 ZHONGSHAN CITY, Guangdong Pr.
CN – China

Verfahren Nr. / Procedure No. PI.U00063

Grundlage für dieses Zertifikat sind die Allgemeinen Geschäftsbedingungen und die „IMQ Prüf-und Zertifizierungsordnung für GS-Zeichen“.

Das Recht zur Benutzung des GS-Zeichens erstreckt sich nur auf die gelisteten Produkte.

This Certificate is subjected to the conditions foreseen by "IMQ Rules for granting the GS Mark".

The licence to use the GS Mark is valid only for the products listed in this Certificate.

Test Report No. AI20-0052801-02

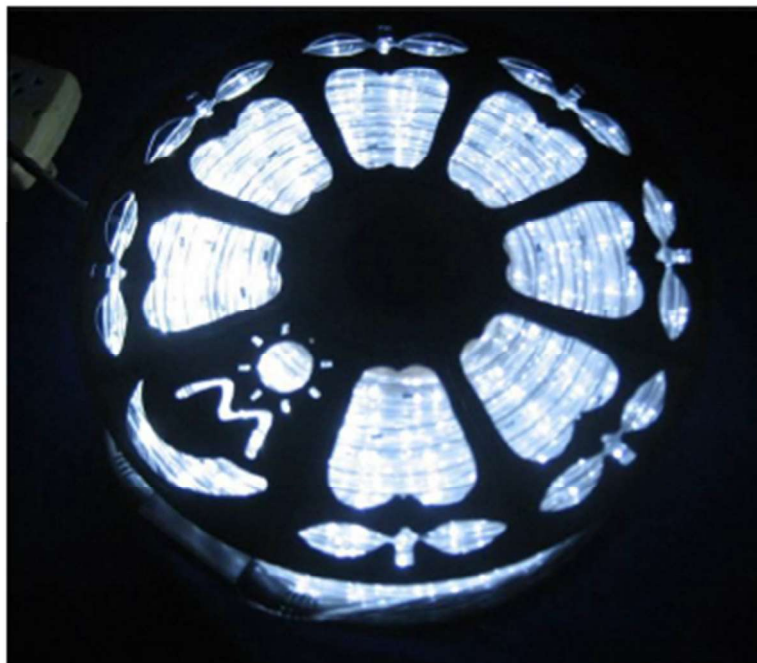
Type reference-Model LED RL36 X, LED RL36-1 X

COMPONENT LIST ANNEXED TO LICENCE (to be attached to the relevant licence)						
Object	(#)	Manufacturer	Type-model	Technical data	Mark(s) of conformity granted	
LED LIGHT BLUE	B	JMX	321BTCA- JYJ3	Vf=2,8-3,4V; If=20mA	IEC/TR 62778	Tested with appliance CEPREI report nr.: T2104WT8888-01465-Y
LED AMBER	B	JMX	321OTCA- JYJ3	Vf=2,0-2,2V; If=20mA	IEC/TR 62778	Tested with appliance CEPREI report nr.: T2104WT8888-01465-Y
LED PURPLE	B	JMX	321PTCA- JYJ3	Vf=2,8-3,4V; If=20mA	IEC/TR 62778	Tested with appliance CEPREI report nr.: T2104WT8888-01465-Y
LED VIOLET	B	JMX	321VTCA- JYJ3	Vf=2,8-3,4V; If=20mA	IEC/TR 62778	Tested with appliance CEPREI report nr.: T2104WT8888-01465-Y
LED WHITE FLASHING	B	JMX	321WTCA- JFJ3	Vf=3-3,5V; If=20mA	IEC/TR 62778	Tested with appliance CEPREI report nr.: T2104WT8888-01465-Y
LED WARM WHITE FLASHING	B	JMX	321NTCA- JFJ3	Vf=3-3,5V; If=20mA	IEC/TR 62778	Tested with appliance CEPREI report nr.: T2104WT8888-01465-Y

(#) Each component is signed by a number having the following meaning:

- 1) Approved component replaceable with another one also approved with equivalent characteristics
- 2) Component replaceable with IMQ authorization only
- 3) Integrated component tested together with appliances
- 4) Alternative component
- 5) Component for optional use

LED RL36-1 W

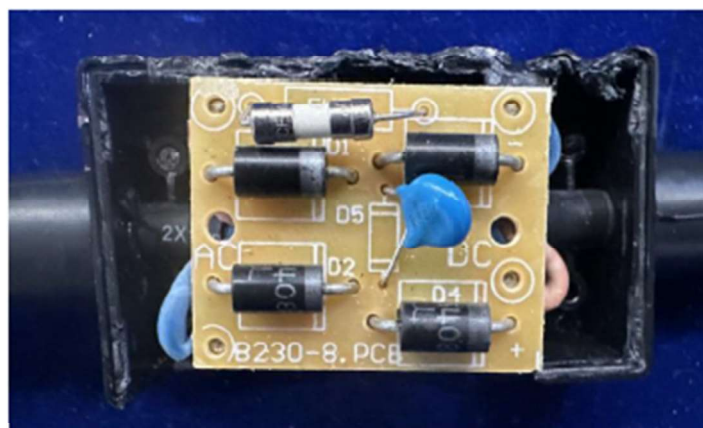


Paolo Lassi

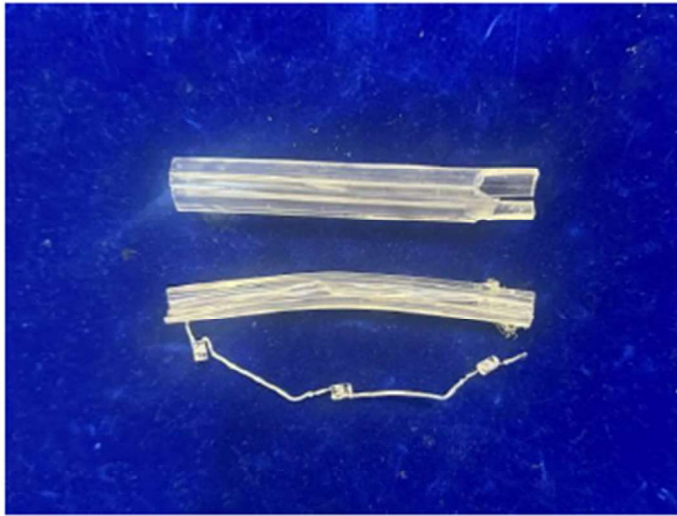
Issued on: 2023-06-08

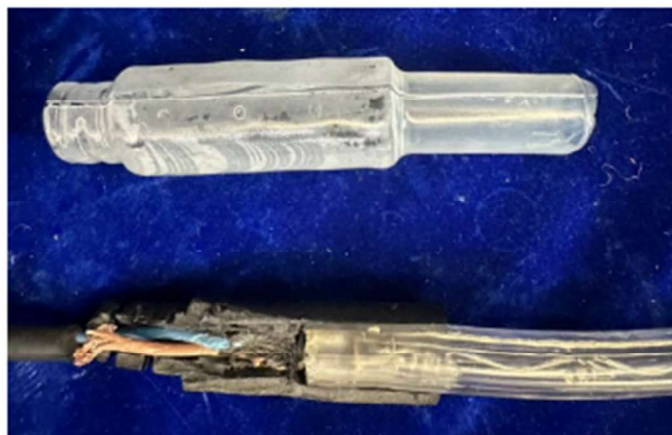


Issued on: 2023-06-08



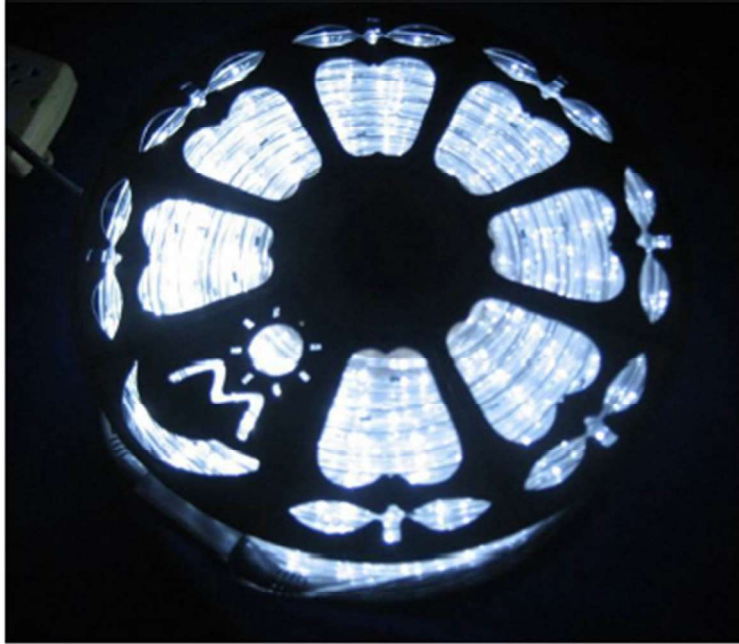




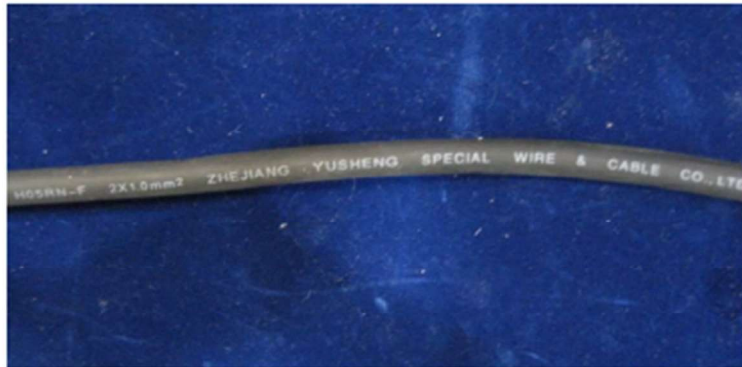




Issued on: 2023-06-08



Issued on: 2023-06-08



Issued on: 2023-06-08



Issued on: 2023-06-08





Issued on: 2023-06-08



Models list and description

Model	Rated power	Rated voltage	N. LED	Length	IP code
LED RL36 X	1,9W/m 86W/45m	220-240V	36/m	Ø13mm x 45m	IP67
LED RL36 X	1,9W/m 86W/45m	220-240V	36/m 2 FLASH/m	Ø13mm x 45m	IP67
LED RL36-1 X	2,8W/m 126W/45m	220-240V	36/m	Ø13mm x 45m	IP67
LED RL36-1 X	4,6W/m 207W/m	220-240V	36/m	Ø13mm x 45m	IP67
LED RL36-1 X	2,8W/m 126W/45m	220-240V	36/m 2 FLASH/m	Ø13mm x 45m	IP67

The "X" in the series model name means the colour of LED, it can be:

- WW => WARM WHITE LED
- W => COOL WHITE LED
- R => RED LED
- B => BLUE LED
- Y => YELLOW LED
- G => GREEN LED
- P => PINK LED
- BS => LIGHT BLUE LED
- A => AMBER LED
- PU => PURPLE LED
- V => VIOLET LED
- WF => WHITE FLASHING LED
- WWF => WARM WHITE FLASHING LED

Henno Lavei

Issued on: 2023-06-08